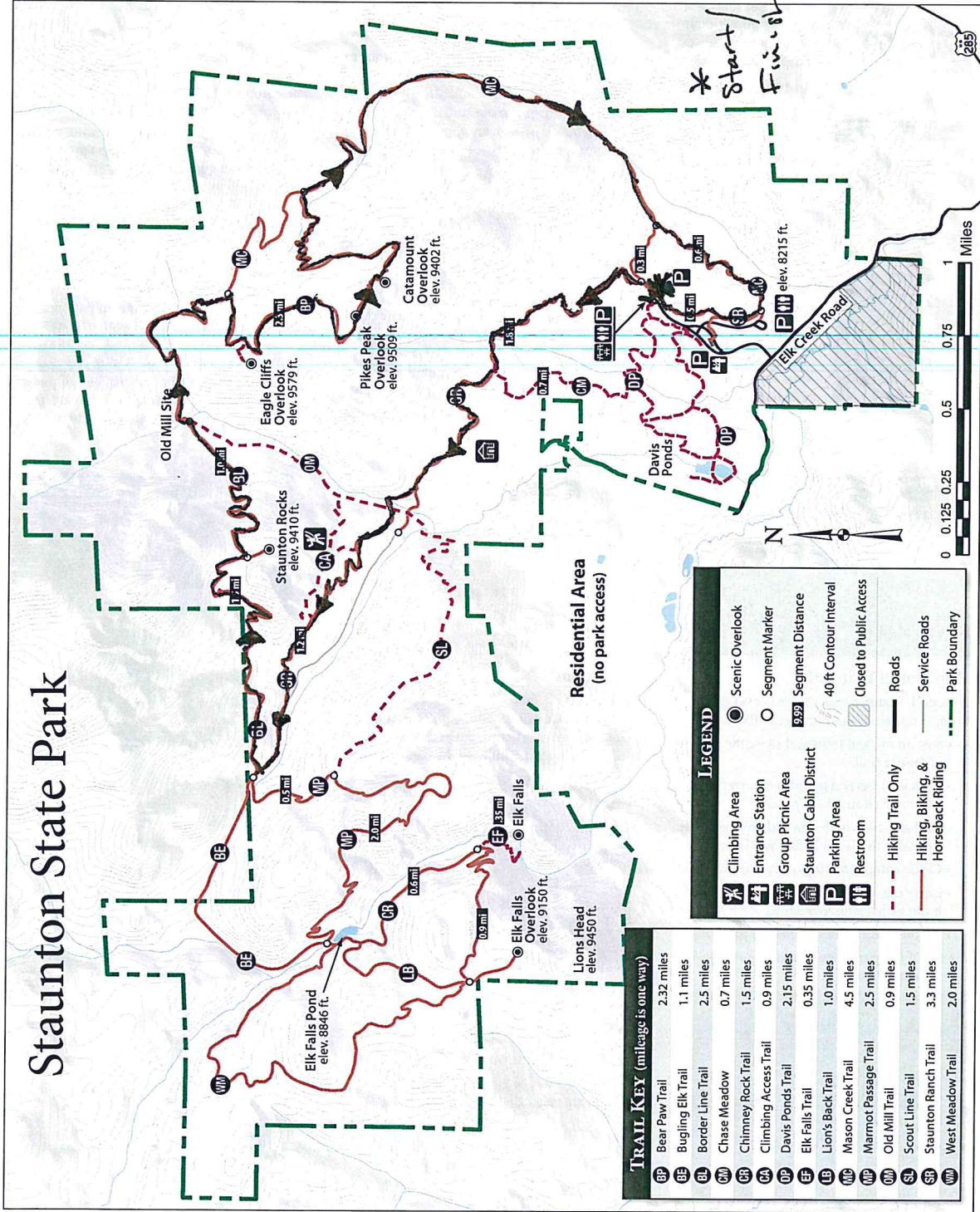


20K

# Staunton State Park



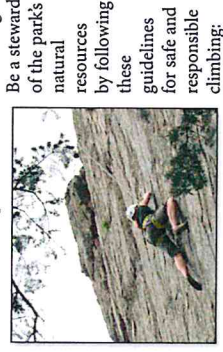
**Enjoy Your Park Safety**  
Staunton State Park offers you the best in a Colorado mountain experience. But keep in mind:



- The park ranges in elevation from 8,100 to over 10,000 feet, so bring water, sunscreen, and a hat to protect against dehydration and sunburn.
- Mountain weather can change quickly. Dress in layers and carry rain gear.
- Cell phone service in the park is limited. In case of an emergency call 911. First Aid assistance is available from park rangers.

### Climbing

Staunton Rocks are spectacular rocky outcroppings in the park—and the ones that are closest to the park entrance for climbing.



Be a steward of the park's natural resources by following these guidelines for safe and responsible climbing:

- Stay on designated trails as you approach Staunton Rocks.
- Minimize your impact every time you climb. Choose routes that do not disturb vegetation.

- Climb without bolting or fixed protection.

- Share the rocks with the raptors that call these rocks home. Watch for and abide by all posted seasonal closures for nesting raptors.

